

Click a Series to jump to page

Core

[Nautilus](#)

[Signature](#)

[800 Series Diamond](#)

[DB Series Subwoofers](#)

[700 Series](#)

[600 Series Anniversary Edition](#)

[Mini Theater](#)

[AM-1](#)

Wireless / Soundbars / Headphones

[Wireless Speakers & Soundbars](#)

[Headphones](#)

Custom Theater

[CT 800 Series](#)

[CT 700 Series](#)

Custom Installation

[CI 800 Series Diamond](#)

[CI 700 Series](#)

[CI 600 Series](#)

[CI 300 Series](#)

[Distribution Amplifiers](#)

[CI Subwoofers](#)

[Marine/Outdoor](#)



801 D4 Signature
California Burl Gloss



Why Bowers & Wilkins?

Bowers & Wilkins leverages over 50 years of experience in building the finest loudspeakers, cherished by owners and used by recording professionals to create the music and movies we love. Whether you are composing a soundtrack, unwinding with your new favorite song or watching a movie with your family, Bowers & Wilkins can connect you with these experiences in a way you never thought possible. **Listen, and you'll see.**

A FIVE-STAR LINEUP.

55 Years of Excellence



Bowers & Wilkins is a global leader in sound with over 55 years experience in making the very best audio equipment in the world.

High Performance Solutions for any Application



Bowers & Wilkins' nearly invisible Custom Installation speakers are made by the same team as their world renowned in-room models and offer the same levels of performance.

CHOSEN BY THE MOST ESTEEMED BRANDS.

Recording Studios



From Abbey Road to Skywalker Sound, professionals all over the world trust Bowers & Wilkins to deliver music the way the artist intended.

Automotive



Bowers & Wilkins creates premium audio systems for some of the world's most prestigious automotive brands like BMW, Aston Martin, McLaren, Volvo and Polestar.



Nautilus and Signature



Nautilus

UAP \$100,000 per pair

Finish/Order Code Special Order.
Please contact your account manager.

Description A design classic and flagship product, Nautilus is traditionally available in Silver, Black or Midnight Blue. Pricing above is for standard finish. Price will vary for special finishes.



801 D4 Signature*

Price \$25,000 each

Features 1" Diamond tweeter
Solid body Tweeter-on-Top
6" Continuum cone FST™
Biomimetic Suspension
Turbine Head
Matrix™
2 x 10" Aerofoil bass units
Flowport™

Finish Midnight Blue Metallic
California Burl Gloss

H x W x D 48" x 17.8" x 23.6"



805 D4 Signature*

Price \$6,000 each

Features 1" Diamond tweeter
Solid body Tweeter-on-Top
6.5" Continuum bass/mid
Matrix
Flowport

Finish Midnight Blue Metallic
California Burl Gloss

H x W x D 17.3" x 9.4" x 14.7

* 801 D4 Signature and 805 D4 Signature are confidential and under embargo until June 28, 2023



800 Series Diamond

Excellence. Evolved.



801 D4



802 D4



803 D4

Price	\$19,000 ea.	\$14,000 ea.	\$11,250 ea.
Features	1" Diamond tweeter Solid body Tweeter-on-Top 6" Continuum cone FST™ Biomimetic Suspension Turbine Head Matrix™ 2 x 10" Aerofoil bass units Flowport™	1" Diamond tweeter Solid body Tweeter-on-Top 6" Continuum cone FST Biomimetic Suspension Turbine Head Matrix 2 x 8" Aerofoil bass units Flowport	1" Diamond tweeter Solid body Tweeter-on-Top 5" Continuum cone FST Biomimetic Suspension Turbine Head Matrix 2 x 7" Aerofoil bass units Flowport
Finishes	Gloss Black Satin Rosenut White Satin Walnut	Gloss Black Satin Rosenut White Satin Walnut	Gloss Black Satin Rosenut White Satin Walnut
H x W x D	48" x 17.8" x 23.6"	48" x 16.25" x 23.7"	45.9" x 14" x 20"



804 D4



805 D4



FS-805 D4 Stand

Price	\$7,000 ea.	\$4,250 ea.	\$700 ea.
Features	1" Diamond tweeter Solid body Tweeter-on-Top 5" Continuum cone FST Biomimetic Suspension Matrix 2 x 6.5" Aerofoil bass units Flowport	1" Diamond tweeter Solid body Tweeter-on-Top 6.5" Continuum bass/mid Matrix Flowport	Floor stand for 805 D4 Integrated cable management Sand-fill mass loading option
Finishes	Gloss Black Satin Rosenut White Satin Walnut	Gloss Black Satin Rosenut White Satin Walnut	Black Silver
H x W x D	42.1" x 12" x 15.4"	17.3" x 9.4" x 14.7"	23.4" x 10" x 14.5"



	HTM81 D4	HTM82 D4	FS-HTM D4 Stand
Price	\$8,500 ea.	\$6,500 ea.	\$900 ea.
Features	1" Diamond tweeter Solid body Tweeter-on-Top 6" Continuum cone FST Biomimetic Suspension Aluminum midrange enclosure Matrix 2 x 8" Aerofoil bass units Flowport	3-way optimized matrix vented-box system 1" diamond dome tweeter 5" Continuum cone FST™ midrange 2 x 6.5" Aerofoil cone bass units Optimized Matrix cabinet 200W	Floor stand for HTM1 D4 or HTM2 D4 center channel speakers.
Finishes	Gloss Black White	Gloss Black White	Black Silver
H x W x D	13.1" x 33.3" x 14.6"	11.4" x 28.1" x 14.5"	11.1" x 27.1" x 14.6"

DB Series Subwoofers

Precision, accuracy, power.



	DB1D	DB2D	DB3D	DB4S
Price	\$5,899	\$4,499	\$3,499	\$2,199
Features	Active balanced-drive closed-box subwoofer system. 2000W Class D Hypex amplifier 2 x 12" Aerofoil cone drive units Balanced drive unit configuration Digital preamp w/ Dynamic EQ App-based set-up BT-LE control	Active balanced-drive closed-box subwoofer system. 1000W Class D Hypex amplifier 2 x 10" Aerofoil cone drive units in a balanced configuration Digital preamp w/ Dynamic EQ App-based set-up BT-LE control	Active balanced-drive closed-box subwoofer system. 1000W Class D Hypex amplifier, 2 x 8" Aerofoil cone drive units in a balanced configuration Digital preamp w/ Dynamic EQ App-based set-up BT-LE control	Active closed-box subwoofer system. 1000W Class D Hypex amplifier 1 x 10" Aerofoil cone drive units Digital preamp w/ Dynamic EQ App-based set-up BT-LE control
Finishes	Gloss Black Satin White	Gloss Black Satin White	Gloss Black Satin White	Gloss Black Satin White
H x W x D	18.1" x 16.9" x 16.1"	16.9" x 14.8" x 14.2"	14.1" x 12.6" x 11.8"	14.8" x 14.1" x 14.5"



700 Series

With the new 700 Series, Studio Sound comes home.



702 S3



703 S3



704 S3

Price	\$3,499.50 ea.	\$2,999.50 ea.	\$1,999.50 ea.
Features	1" Decoupled Carbon Dome Tweeter Solid Body Tweeter-on-Top 6" Continuum FST™ midrange 3 x 6.5" Aerofoil Profile Bass Decoupled Midrange Biomimetic Suspension	1" Decoupled Carbon Dome Tweeter Solid Body Tweeter-on-Top 6" Continuum Cone Midrange 2 x 6.5" Aerofoil Profile Bass Decoupled Midrange Chassis Biomimetic Suspension	1" Decoupled Carbon Dome Tweeter 5" Continuum Cone Midrange 2 x 5" Aerofoil Profile Bass Decoupled Midrange Chassis Biomimetic Suspension
Finishes	Gloss Black Mocha Satin White	Gloss Black Mocha Satin White	Gloss Black Mocha Satin White
H x W x D	44.8" x 11.4" x 16.1" <small>Includes tweeter and integrated plinth</small>	39.8" x 7.6" x 13.9" without plinth 44" x 11.4" x 14.6" with plinth	36.4" x 6.5" x 11.8" without plinth 38" x 9.9" x 12.6" with plinth



705 S3



706 S3



707 S3

Price	\$1,699.50 ea.	\$1,099.50 ea.	\$899.50 ea.
Features	1" Decoupled Carbon Dome Tweeter Solid Body Tweeter-on-Top 6.5" Continuum Cone bass /midrange	1" Decoupled Carbon Dome Tweeter 6.5" Continuum Cone bass /midrange	1" Decoupled Carbon Dome Tweeter 5" Continuum Cone bass/midrange
Finishes	Gloss Black Mocha Satin White	Gloss Black Mocha Satin White	Gloss Black Mocha Satin White
H x W x D	16.3" x 7.6" x 13.3" <small>Includes grille and terminals</small>	13.6" x 7.6" x 13.1" <small>Includes grille and terminals</small>	11.8" x 6.5" x 11.2" <small>Includes grille and terminals</small>



	HTM71 S3	HTM72 S3	FS-700 S3
Price	\$2,499 ea.	\$1,499 ea.	\$399.50 ea.
Features	1" Carbon Dome Tweeter Solid Body Tweeter-on-Top 5" Continuum Cone 2 x 5" Aerofoil Profile Bass	1" Carbon Dome Tweeter 2 x 5" Continuum Cone bass/mid	700 Series speaker stand Integrated cable management Sand-fill mass loading option
Finishes	Gloss Black Mocha Satin White	Gloss Black Mocha Satin White	Black Silver
H x W x D	9.2" x 24.7" x 14" <small>Includes tweeter, grille and terminals</small>	6.5" x 18.8" x 11.9" <small>Includes grille and terminals</small>	24.2" x 11.4" x 11.7"



600 Series Anniversary Edition

For the love of music.



603 S2 Anniversary Edition



606 S2 Anniversary Edition



607 S2 Anniversary Edition



STAV24 Stand

Price	\$1,149.50 ea.	\$499.50 ea.	\$399.50 ea.	\$124.50 ea.
-------	----------------	--------------	--------------	--------------

Description	3-way vented box system	2-way vented box system	2-way vented box system	Universal 24" metal black spiked stand for use with 606 and 607
	1" DDD aluminum tweeter	1" DDD aluminum tweeter	1" DDD aluminum tweeter	
	6" Continuum FST midrange	6.5" Continuum bass / midrange	5" Continuum bass / midrange	
	2 x 6.5" Paper/Aramid fiber bass			
	200W	120W	100W	
Finishes	Matte Black	Matte Black	Matte Black	Black
	Matte White	Matte White	Matte White	
	Oak	Oak	Oak	
H x W x D	38.8" x 7.5" x 13.4"	13.5" x 7.5" x 12.8"	11.8" x 6.5" x 9.1"	24" x 9.5" x 11.75"
	Not including plinth/feet	Including grille and terminals	Including grille and terminals	



HTM6 S2 Anniversary Edition



ASW610XP



ASW610



ASW608

Price	\$899 ea.	\$1,799 ea.	\$899 ea.	\$599 ea.
-------	-----------	-------------	-----------	-----------

Description	2-way vented box system	Active closed-box subwoofer	Active, closed-box subwoofer	Active, closed-box subwoofer
	1" DDD aluminium tweeter	10" Paper/Aramid fiber bass	10" paper/Aramid fiber bass	8" paper/Aramid fiber bass
	5" Continuum bass/midrange			
	120W	500 watt Class D amplifier	200 watt Class D amplifier	200 watt Class D amplifier
Finishes	Matte Black	Matte Black	Matte Black	Matte Black
	Matte White	Matte White	Matte White	Matte White
	Oak			
H x W x D	6.3" x 18.9" x 11.0"	12.8" x 12.8" x 14.7"	12.2" x 12.2" x 14.8"	10.2" x 10.2" x 13"
	Including grille and terminals	Including grille and controls, not including feet	Including grille and controls, not including feet	Including grille and controls, not including feet



Wireless Speakers

Setting the new standard in wireless audio.



Zeppelin

\$799 ea.

Wireless speaker, Alexa Built-in, Dynamic EQ, 2x 1" tweeter, 2x 3.5" midrange, 1x 6" bass

Midnight Grey | Pearl Grey

HWD: 8.27" x 25.6" x 7.5"

WALL BRACKET

\$99 ea.



Panorama 3

\$999 ea.

Dolby Atmos, Dolby TrueHD compatible, Alexa Built-in, HDMI eARC, Integrated streaming services via Music App, Spotify Connect, AirPlay 2, atpX adaptive. Wall bracket included.

HWD: 2.9" x 47.7" x 5.6"



FORMATION DUO

\$4,999 per pair



FORMATION WEDGE

\$999 ea.



FORMATION FLEX

\$499 ea.

Price

Description

Powered wireless 2-way bookshelf speakers

1" Carbon Dome Tweeter on top
6.5" Continuum Cone bass/mid
2 x 125W

Wireless speaker

120° shape—optimally positioned drive units
DDD Tweeter technology
Dynamic EQ
2 x 40W (tweeter), 2 x 40W (midrange)
1 x 80W (subwoofer)

Compact wireless speaker

1" decoupled double dome tweeter
4" woven glass fiber cone bass/midrange
Use as mono, stereo, whole home, or as surrounds with Formation Bar/Bass

Finishes

Black | White

Black | Silver

Black

H x W x D

15.6" x 7.8" x 12"

9.1" x 17.3" x 9.5"

8.5" x 5.1" x 5.1"



FS DUO FLOOR STAND

Optional stands for Formation Duo.
Black | Silver

\$999 per pair

23.4" H x 9.5" W x 12.4" D

WEDGE WALL BRACKET

Optional wall bracket for Formation Wedge.

\$99 ea.



FLEX FLOOR STAND

32.3" stand for Formation Flex.

\$99 ea.

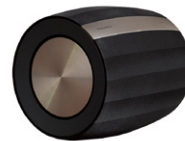
FLEX WALL BRACKET

\$49 ea.



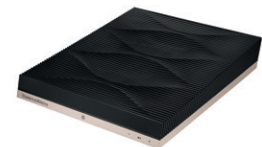
FORMATION BAR

\$1,299 ea.



FORMATION BASS

\$1,199 ea.



FORMATION AUDIO

\$799 ea.

Price

Description

Wireless 3-channel soundbar
3 x 1" Double Dome Tweeter
6 x 2.5" glass fiber mid/bass
Dedicated center channel
6 x 40W (240W)
Optical input

Powered wireless subwoofer
2 x 6.5" long throw bass units
Pairs seamlessly w/ Formation speakers
Dynamic EQ
200W

Streaming media player
Digital audio in (Toslink) Analog audio in (2 x RCA)
Digital audio out (RCA) Analog audio out (2 x RCA)
24/96 bit streaming resolution

Finish

Black

Black

Black

H x W x D

4.3" x 48.8" x 4.21"

10" x 11" x 10.25"

1.7" x 8.5" x 10.3"



Mini Theater

Great value and flexibility with an immersive cinematic soundscape.



M-1

Price **\$299 ea.**



M-1 Stand

Price **\$229 ea.**

Description	2-way vented monitor 1" metal dome tweeter 4" woven glass fiber bass / midrange. Swivel mounting bracket 100W	Optional floor stand for M-1
Finish	Matte Black Matte White	Matte Black Matte White
H x W x D	9.8" x 4.5" x 6.4" Height w/ horizontal mount: 5.4375"	37.7" x 9.9" x 9.9"



ASW608

Price **\$599 ea.**

Description	Active, closed-box subwoofer 8" paper/Aramid fiber bass 200 watt Class D amplifier
Finish	Matte Black Matte White
H x W x D	10.2" x 10.2" x 13"

Setting the standard for compact home theater

MT-50 System

M-1x 5 and ASW608



\$2,094



MT-50 is a popular 5.1 system consisting of 5x M-1 satellite speakers and the ASW 608 subwoofer. The versatile M-1 can be placed on a shelf with its included table stand or wall mounted using the included bracket. An optional floor stand is available as well. When used in the center channel position, M-1 can be rotated 90° as shown.

These models are priced and sold separately. Available in Matte Black or Matte White.



Headphones

Hear True.



Px8

\$699



Black



Tan

Special Edition Models

Px8 McLaren Edition
Px8 007 Edition
\$799

- Flagship wireless, over-ear headphones
- 2x40 mm angled Carbon Cone drive units
- Hybrid Noise Cancellation
- Ambient Pass-Through
- Wear detection sensor
- aptX™ Adaptive
- 30 hours of listening time
- 15-minute quick charge for 7 hours of playback



Px7 S2

\$399



Black



Blue



Grey

- Premium wireless, over-ear headphones
- 2x40 mm angled custom drive units
- Hybrid Noise Cancellation
- Ambient Pass-Through
- Wear detection sensor
- aptX™ Adaptive
- 30 hours of listening time
- 15-minute quick charge for 7 hours of playback



Pi7 S2

\$399



Satin Black



Canvas White



Midnight Blue

- In-ear noise canceling True Wireless headphones
- True 24-bit audio connection
- 2-way drive unit design
- High performance DSP
- Bluetooth 5.0 with aptX™ Adaptive technology
- Adaptive ANC
- Audio retransmission from charging case
- Wireless and USB-C charging
- 15 minute quick charge = 2 hours playback



Pi5 S2

\$299



Storm Grey



Cloud Grey



Spring Lilac

- In-ear noise canceling True Wireless Headphones
- True Wireless technology
- Bluetooth 5.0 with AptX technology
- Active Noise Canceling
- Wireless and USB-C charging
- 15 minute quick charge = 2 hours playback



CT 800 Series

The complete cinema experience in your home.



CT8 LR*

Price \$17,250 ea.

Description 3-way closed-box system
 1 x 1.25" metal dome Nautilus tweeter
 1 x 6" Aramid fiber FST midrange
 2 x 10" Rohacell bass
 1000W

Finish Black

H x W x D 43.3" x 12.8" x 21.65"



CT8 CC*

Price \$17,250 ea.

Description 3-way closed-box system
 1 x 1.25" metal dome tweeter
 1 x 6" Aramid fiber FST midrange
 2 x 10" Rohacell bass.
 1000W

Finish Black

H x W x D 12.8" x 43.3" x 21.65"

CT8 LR and CT8 CC:

- CT8 XO MkII must be used
- Pairing with CT8 SW is mandatory
- Bi-amplification is required (with minimum wattage requirements)
- Contact your Account Manager for support

**Includes CT8 XO MkII; bi-amplification is required.*

**Includes CT8 XO MkII; bi-amplification is required.*



CT8 XO MKII

Price Included with CT8LR and CT8CC

Description Active bass management controller included with CT8LR, CT8CC, and CT8DS.

Finish Aluminum
H x W x D 1.75" x 19" x 14"



CT8 SW

Price \$4,000 ea.

Description Closed-box subwoofer
1 x 15" Rohacell bass
1000W

Finish Black
H x W x D 18.7" x 18.7" x 18.7"



CT8.2 LCRS

Price \$7,000 ea.

Description 3-way custom install home theatre LCRS

8" Paper/Aramid fiber cone bass
 6" woven Aramid fiber FST midrange
 1.25" aluminum dome tweeter
 500W

Finish Black
H x W x D 39.4" x 12.8" x 11.8"



CT8.4 LCRS

Price \$4,600 ea.

Description 3-way custom install home theatre LCRS
 Value engineered version of the CT8 LR with passive crossover
 8" Rohacell bass unit
 6" blue Aramid fiber FST midrange
 1.25" aluminum dome tweeter
 200W

Finish Black
H x W x D 24.8" x 12.8" x 7.3"



CT 700 Series

The complete cinema experience in your home.



CT7.3 LCRS

Price

\$2,100 ea.



CT7.4 LCRS

\$1,400 ea.



CT7.5 LCRS

\$800 ea.

Description

3-way custom install home theatre LCRS
2 x 8" fibre cone bass
6" blue Aramid fiber FST midrange
1" soft dome tweeter
200W

2-way custom install home theatre LCRS
2 x 6" blue Aramid fiber bass/midrange
1" soft dome tweeter.
150W

2-way custom install home theatre LCRS
7" blue Aramid fiber bass/midrange
1" soft dome tweeter
120W

Finish

Black

Black

Black

H x W x D

14.2" x 23.9" x 10.5"

13.5" x 17.5" x 10.5"

12" x 17.5" x 10.5"



CTSW15

Price

\$1,700 ea.



CTSW12

\$1,400 ea.



CTSW10

\$1,000 ea.

Description

Passive, closed-box subwoofer
with optional rack-mount amplifier
Designed to fit in home theater cabinetry
15" paper/Aramid fiber cone bass driver
1000W

Passive, closed-box subwoofer
with optional rack-mount amplifier
Designed to fit in home theater cabinetry
12" paper/Aramid fiber cone bass driver
1000W

Passive, closed-box subwoofer
with optional rack-mount amplifier
Designed to fit in home theater cabinetry
10" paper/Aramid fiber cone bass driver
1000W

Finish

Black

Black

Black

H x W x D

21.7" x 21.7" x 10.3"

18.3" x 15.6" x 10.3"

14.2" x 13.4" x 10.3"



SA1000

Price

\$2,000 ea.

Description

1000W Class D subwoofer amplifier for
use with CTSW15, CTSW12, CTSW10
2U rack-mountable

Finish

Black

H x W x D

3.9" x 16.9" x 12.7"



CI 800 Series Diamond

The world's most advanced architectural loudspeaker range.



Model + Back Box	CWM8.3 D + BBW83	CWM8.5 D + BBW85	CCM8.5 D + BBC85
System Price	\$6,100 (1 speaker w/ Back Box)	\$3,350 (1 speaker w/ Back Box)	\$4,100 (1 speaker w/ back box)
Model	CWM8.3 D	CWM8.5 D	CCM8.5 D
Price	\$5,000 ea.	\$2,550 ea.	\$3,200 ea.
Description	3-way in-wall system 1" Diamond dome tweeter w/ Nautilus tube 5" Continuum FST midrange driver with anti-resonance plug 2 x 7" Aerofoil Bass drivers Mini baffle can be turned through 90° Flowport	2-way in-wall system 1" Diamond dome tweeter w/ Nautilus tube, 7" Continuum bass/midrange driver with anti-resonance plug Flowport	2-way in ceiling system. 1" Diamond dome tweeter w/ Nautilus tube 7" Continuum bass/midrange driver with anti-resonance plug Rotatable baffle allows for toe-in Flowport
Power Handling	200W	120W	120W
Frame Size	34.6" x 10" (880mm x 254mm)	16.2" x 9.72" (411mm x 247mm)	13.8" x 13.8" (351mm x 351mm)
Cut-Out Size	34" x 9.4" (862mm x 238mm)	15.5" x 9.09" (395mm x 231mm)	13" x 13" (331mm x 331mm)
Depth of Enclosure	3.4" (90mm)	3.4" (90mm)	7" (177mm)
Mandatory Back Box	BBW83	BBW85	BBC85
Price	\$1,100 ea.	\$800 ea.	\$900 ea.

Note: Back boxes are mandatory for CI 800 Series Diamond models

Distribution Amplifiers

Maximum performance, minimum rack space.

Model	CDA-16	CDA-4D	CDA-2HD
UAP	\$1,999 ea.	\$2,000 ea.	\$2,500 ea.
Description	16-ch, 8 zone distribution amplifier. 50W per ch (8 ohm) 100W per ch (4 ohm). 1U rack design.	4-ch, 2 zone distribution amplifier. 60W per ch (8 ohm) 125W per ch (4 ohm). 1U rack design	2-ch, 2 zone distribution amplifier. 250W per ch (8 ohm) 500W per ch (4 ohm). 2U - 1/2 rack design.
Dimensions	Height: 1.8" (44.5mm) 1U Height w/ feet: 2.2" (55.5mm) Width: 17.2" (437mm) Depth: 12.2" (310mm)	Height: 1.7" (42.5mm) 1U Height w feet: 2.3" (57.5mm) Width: 17.2" (436mm) Depth: 11.8" 300mm	Height: 3.4" (85mm) 1U Height w feet: 3.9" (100mm) Width: 8.6" (218mm) Depth: 12.4" 315mm



CI 700 Series

Discrete performance with world-class drive unit technology.



	CCM7.3 S2		CCM7.5 S2
Price	\$2,100 ea.		\$1,000 ea.
Description	3-way in-ceiling system 1" Carbon Dome tweeter 4" Continuum cone FST midrange 2 x 5" Aerofoil profile bass		2-way in-ceiling system 1" Carbon Dome tweeter 7" Continuum cone bass/midrange
Power Handling	25W – 200W		25W – 150W
Frame Size	H: 14" W: 14"		11.4"
Cut-Out Size	H: 13.1" W: 13.1"		10"
Depth Behind Surface	7.7"		5"
Pre-Mount Kit	PMK 7C		PMK C8*
Price	\$35		\$25
Back Box	Integrated Back Box		BB 6C (FP30112)
Price	N/A		\$150 ea. Optional Square Grille: GR68SQ

*Note: PMK is mandatory when BB 6C is used.



	CWM7.3 S2	CWM7.4 S2	CWM7.5 S2
Price	\$2,100 ea.	\$1,150 ea.	\$1,000 ea.
Description	3-way in-wall system. 1" Carbon Dome tweeter 2 x 4" Continuum cone FST midrange 2 x 6" Aerofoil profile bass Flowport Optional Air Reservoir included	2.5-way in-wall system 1" Carbon Dome tweeter 2 x 4" Continuum cone mid/bass 2 x 4" Aramid Fiber/Paper bass	2-way in-wall system 1" Carbon Dome tweeter 1 x 5" Continuum cone mid/bass Flowport Optional Air Reservoir included
Power Handling	25W – 200W	25 – 150W	25 – 150W
Frame Size	H 29" (736mm) W 11" (276mm)	H 24.6" (625mm) W 6.8" (175mm)	H 14" (356mm) W 8.5" (212mm)
Cut-Out Size	28" (711mm) W 9.9" (251mm)	H 23.5" (597mm) W 5.8" (147mm)	H 13" (331mm) W 7.4" (187mm)
Depth Behind Surface	4" (102mm)	3.64" (93mm)	4" (102mm)
Pre-Mount Kit	PMK 7.3W	PMK CWMC7	PMK 7.5W
Price	\$35	\$35	\$35
Back Box	Integrated Back Box	BB LCR7	Integrated Back Box
Price	N/A	\$300	N/A



CI 600 Series

Our most extensive range, with a model to suit every application.

Square Grilles

GR66SQ
Square Grilles for 66 models
Price: \$49 ea.

GR68SQ
Square Grilles for 68 models
Price: \$49 ea.

Frame Plaster Kits - for trim-less aesthetic

FPK 6R for 6" round models
FPK 8R for 8" round models
Price: \$30 ea.

FPK 6SQ for 6" models w/ GR66SQ
FPK 8SQ for 8" models w/ GR68SQ
Price: \$40 ea.



CCM 682

CCM 683

CCM 684

Price	\$825 ea.	\$600 ea.	\$400 ea.
Description	2-way in-ceiling system, 1" Nautilus swirl loaded aluminum dome tweeter, 8" Blue aramid fiber cone bass/midrange. <i>Features a larger magnet and voice coil than CCM683.</i>	2-way in-ceiling system, 1" Nautilus Swirl loaded aluminum dome tweeter, 8" Blue aramid fiber cone bass/midrange.	2-way in-ceiling system, 1" soft dome tweeter, 8" Black Glassfibre cone bass/midrange
Power Handling	25 - 150W	25 -130W	25 -130W
Frame Diameter	11.4" (290mm)	11.4" (290mm)	11.4" (290mm)
Cut-Out Diameter	9.9" (251mm)	9.9" (251mm)	9.9" (251mm)
Depth Behind Surface (.5" minimum wall)	4.8" 122mm	4.8" 122mm	4.8" 122mm
Pre-Mount Kit	PMK C8*	PMK C8*	PMK C8*
Price	\$25 ea.	\$25 ea.	\$25 ea.
Backbox	BB 6C	BB 6C	BB 6C
Price	\$150 ea.	\$150 ea.	\$150 ea.



CCM 662

CCM 663

CCM 663RD

CCM 664

Price	\$700 ea.	\$475 ea.	\$525 ea.	\$350 ea.
Description	2-way in-ceiling system, 1" Nautilus swirl loaded aluminum dome tweeter, 6" Blue aramid fiber cone bass/midrange. <i>Features a larger magnet and voice coil than CCM663.</i>	2-way in-ceiling system 1" Nautilus swirl loaded aluminum dome tweeter 6" Blue aramid fiber cone bass/ midrange	Reduced depth version of CCM 663.	2-way in-ceiling system 1" soft dome tweeter 6" Black Glassfiber cone bass/midrange
Power Handling	25 - 150W	25 - 130W	25W - 100W	25 - 130W
Frame Diameter	9.5" (240mm)	9.5" (240mm)	9.5" (240mm)	9.5" (240mm)
Cut-Out Diameter	8" (202mm)	8" (202mm)	8" (202mm)	8" (202mm)
Depth Behind Surface (.5" minimum wall)	4.8" 122mm	4.8" 122mm	3.62" (92mm)	4.8" 122mm
Pre-Mount Kit	PMK C6*	PMK C6*	PMK C6*	PMK C6*
Price	\$25 ea.	\$25 ea.	\$25 ea.	\$25 ea.
Backbox	BB 6C	BB 6C	BB 6C or shallower BB 6W	BB 6C
Price	\$150 ea.	\$150 ea.	\$150 ea.	\$150 ea.

*Note: PMKs are mandatory when BB 6C or BB 6W are used.



CI 600 Series

**CCM 665**

\$275 ea.

**CCM 663SR**

\$700 ea.

**CCM 664SR**

\$475 ea.

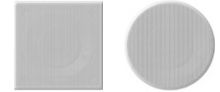
**CCM 632**

\$350 ea.

Price	\$275 ea.	\$700 ea.	\$475 ea.	\$350 ea.
Description	2-way in-ceiling system, 1" soft dome tweeter, 6" Black Glassfiber cone bass/midrange	2-way dual channel in-ceiling system, 1" soft dome tweeter, 6" Blue aramid fiber cone bass/midrange	2-way dual channel in-ceiling system, 1" soft dome tweeter, 6" Black Glassfiber cone bass/midrange	Single driver in-ceiling system, 3" paper cone full-range
Power Handling	25 - 130W	25 - 80W (per channel)	25 - 80W (per channel)	10 - 60W (per channel)
Frame Diameter	9.5" (240mm)	9.5" (240mm)	9.5" (240mm)	5.7" (146.5mm)
Cut-Out Diameter	8" (202mm)	8" (202mm)	8" (202mm)	4.5" (114.3mm)
Depth Behind Surface (.5" minimum wall)	4.8" (122mm)	4.8" (122mm)	4.8" (122mm)	3.4" (86.3mm)
Pre-Mount Kit	PMK C6*	PMK C6*	PMK C6*	PMK C3
Price	\$25 ea.	\$25 ea.	\$25 ea.	\$25 ea.
Backbox	BB 6C	BB 6C	BB 6C	Integrated Backbox
Price	\$150 ea.	\$150 ea.	\$150 ea.	

CCM 632 fits in the BB6C for "fire-rated applications"

Square and round grilles included

**CWM 663**

\$450 ea.

**CWM 664**

\$350 ea.

**CWM 652**

\$350 ea.

Price	\$450 ea.	\$350 ea.	\$350 ea.
Description	2-way in-wall system, 1" Nautilus tube loaded aluminum dome tweeter, 6" Blue aramid fiber cone bass/midrange	2-way in-wall system, 1" soft dome tweeter, 6" Black Glassfiber cone bass/midrange	2-way in-wall system, 1" Nautilus Tube loaded aluminum dome tweeter, 5" Blue aramid fiber cone bass/midrange
Power Handling	25 - 150W	25 - 130W	25 - 100W
Frame Height	12.4" (315mm)	12.4" (315mm)	10.9" (264mm)
Frame Width	8.7" (221mm)	8.7" (221mm)	7.5" (191mm)
Cut-Out Height	10.9" (279mm)	10.9" (279mm)	8.9" (228mm)
Cut-Out Width	7.2" (183mm)	7.2" (183mm)	6.0" (153mm)
Depth Behind Surface (.5" minimum wall)	3.3" (84mm)	3.3" (84mm)	3.3" (84mm)
Pre-Mount Kit	PMK W6*	PMK W6*	PMK W5*
Price	\$25 ea.	\$25 ea.	\$25 ea.
Backbox	BB 6W	BB 6W	BB 6W
Price	\$150 ea.	\$150 ea.	\$150 ea.

*Note: PMKs are mandatory when BB 6C or BB 6W are used.








CI 300 Series and Outdoor

						
	CCM 382		CCM 362		CWM 362	
UAP	\$260 ea.		\$200 ea.		\$260 ea.	
Description	2-way in-ceiling system 1" soft dome tweeter 8" polypropylene cone bass/midrange		2-way in-ceiling system 1" soft dome tweeter 6" polypropylene cone bass/midrange		2-way in-wall system 1" soft dome tweeter 6" polypropylene cone bass/midrange	
Power Handling	80W		80W		80W	
Frame Diameter	11.4" (290mm)		9.5" (240mm)		Height: 12.4" (315mm) Width: 8.7" (221mm)	
Cut-Out Diameter	9.8" (249mm)		7.9" (200mm)		Height: 10.9" (275mm) Width: 7.2" (181mm)	
Depth Behind Surface (.5" minimum wall)	3" (77mm)		2.7" (69mm)		2.5" (64mm)	
Pre-Mount Kit	PMK C8* (FP25375)		PMK C6* (FP25353)		PMK W6* (FP25349)	
UAP	\$25 ea.		\$25 ea.		\$25 ea.	
Backbox	BB 6C (FP30112)		BB 6C (FP30112)		BB 6W (FP30120)	
UAP	\$150 ea.		\$150 ea.		\$150 ea.	

Note: PMKs are mandatory when BB 6C or BB 6W are used.

Marine Series and AM-1 Indoor/Outdoor Loudspeakers

						
	Marine 8		Marine 6		AM-1	
UAP	\$549 ea.		\$399 ea.		\$399.50 ea.	
Description	Marine speaker, 2-way system, 1" soft dome tweeter, 8" polypropylene cone bass/midrange		Marine speaker, 2-way system, 1" soft dome tweeter, 6" polypropylene cone bass/midrange		2-way weatherproof indoor/outdoor system with Auxillary Bass Radiator. 1" aluminum dome tweeter. 5" glassfibre cone bass/midrange. Power handling 100W.	
Power Handling	20W – 80W		20W – 80W		Dimensions:	
Frame Size	11.5" (292mm)		9.6" (243mm)		12.25" x 7" x 8.25" (includes wall bracket)	
Cut-Out Size	10" (253mm)		8" (202mm)		Available in Black or White	
Depth Behind Surface (.5" minimum wall)	3.7" (93mm)		3.5" (88mm)			
Pre-Mount Kit	PMK C8* (FP25375)		PMK C6* (FP25353)			
UAP	\$25 ea.		\$25 ea.			



CI Subwoofers



ISW-8

UAP	\$1,700 ea. \$2,500 with back box
Description	12" in-wall/in-floor subwoofer designed to fit between 2x4 stud bays. Perfect match for CI800/700 Series.
Cabinet Dimensions	Height: 64.6" (1640mm) Width: 13.8" (350mm) Depth: 3.3" (84mm)
Baffle Dimensions	Height 15.8" (400mm) Width: 15.8" (400mm) Depth: 0.3" (8.5mm)
Shipping Weight	1 per carton 13.6
Back Box	ISW 8BB (FP43184) Mandatory Back Box for ISW8
UAP	\$800



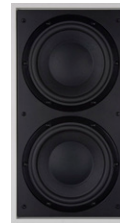
ISW-6

UAP	\$1,300
Description	2x 3x7" RTD - in-wall/in-floor subwoofer designed to fit between 2x4 stud bays. Perfect match for CI600/300 Series.
Cabinet Dimensions	Height: 13.8in (350mm) Width: 13.8in (350mm) Depth: 3.5in (87.5mm)
Baffle Dimensions	Height: 5.4" (136mm) Width: 10.5" (267mm) Depth: 0.3" (6.5mm)
Shipping Weight	1 per carton 15.5 lbs.
Back Box	Retrofit Grille for ISW-6 GRISW6
UAP	\$180



ISW-3

UAP	\$1,400 ea.
Description	In-floor/wall/ceiling/millwork subwoofer 2 x 6.5" paper/Aramid fiber cone bass drivers
Dimensions	Width: 13" (330mm) Length: 18.5" (470mm) Depth: 9.25" (235mm)
Cut-Out Size	N/A
Electronics	CDA-2HD (mandatory)
Back Box	N/A
UAP	-



ISW-4

UAP	\$1,100
Description	In wall subwoofer system requires external rack-mount amplifier, 2 x 8" paper/Aramid fiber cone bass drivers
Dimensions	Height: 20.6" (524mm) Width: 11.6" (294mm) Depth Behind Surface (.5" wall): 3.4" (86mm)
Cut-Out Size	H 19.1" (485mm) x W 10" (255mm)
Electronics	CDA-2HD (mandatory)
Back Box	BB ISW4 (FP28948)
UAP	\$275 ea.

Note: BB ISW4 is mandatory with ISW4



DISCLAIMER: Prices and specifications are subject to change without notice. We are not responsible for typographical errors.

Bowers & Wilkins

www.bowerswilkins.com